

CONGREGATIONAL CHAPEL BEING
CONVERTED TO FLATS 2009/10



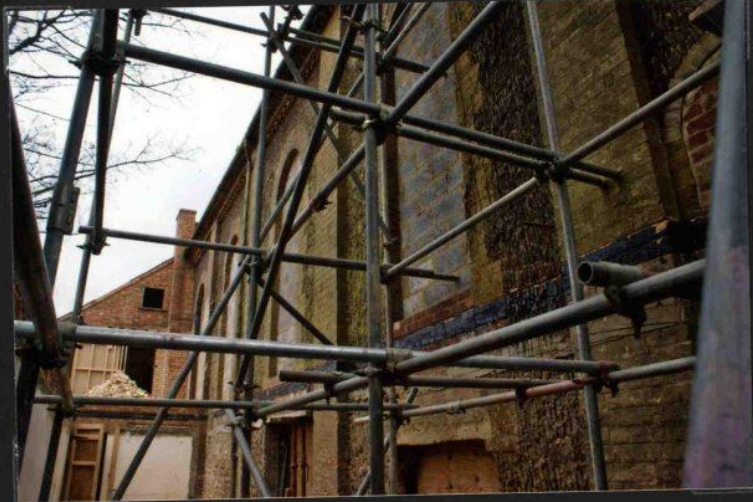
ENTRANCE TO FLATS



THE GREAT HALL OR SUNDAY SCHOOL
EXTENSION 1903



WALL OF CONGREGATIONAL CHURCH



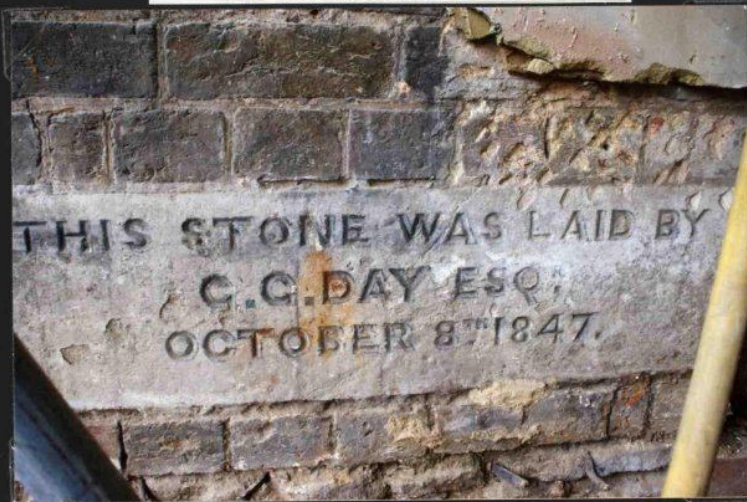
LOOKING TOWARDS SUN STREET



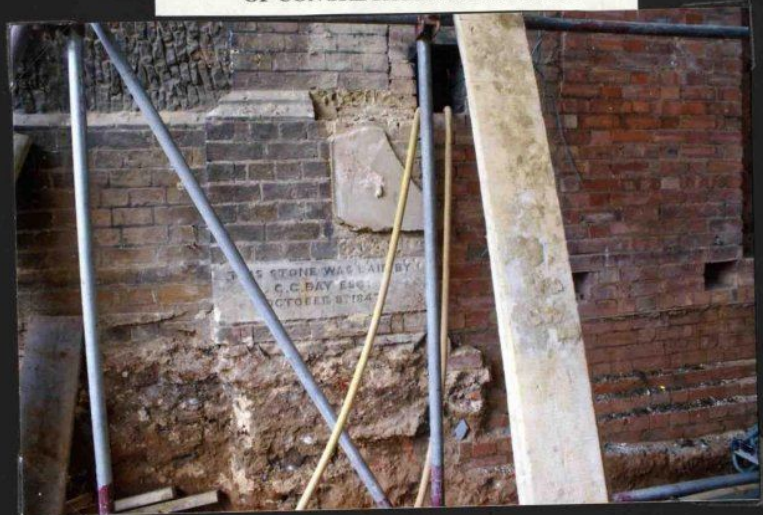
WINDOW IN IRONSTONE WALL



ONE OF SEVERAL STONES LAID IN WALL
OF CONGREGATIONAL CHURCH



ONE OF THE MANY STONES LAID IN WALL
OF CONGREGATIONAL CHURCH



LOOKING INSIDE SUNDAY SCHOOL
EXTENSION



STONE WITH SPECIAL SPACE FOR TIME
CAPSULE

